

1- The cumulative percentage of students is calculated according to the following equation:

$$\text{- Cumulative Percentage} = \frac{\sum (\text{Subject Percentage} * \text{Credit Hours})}{\text{Earned Hours}}$$

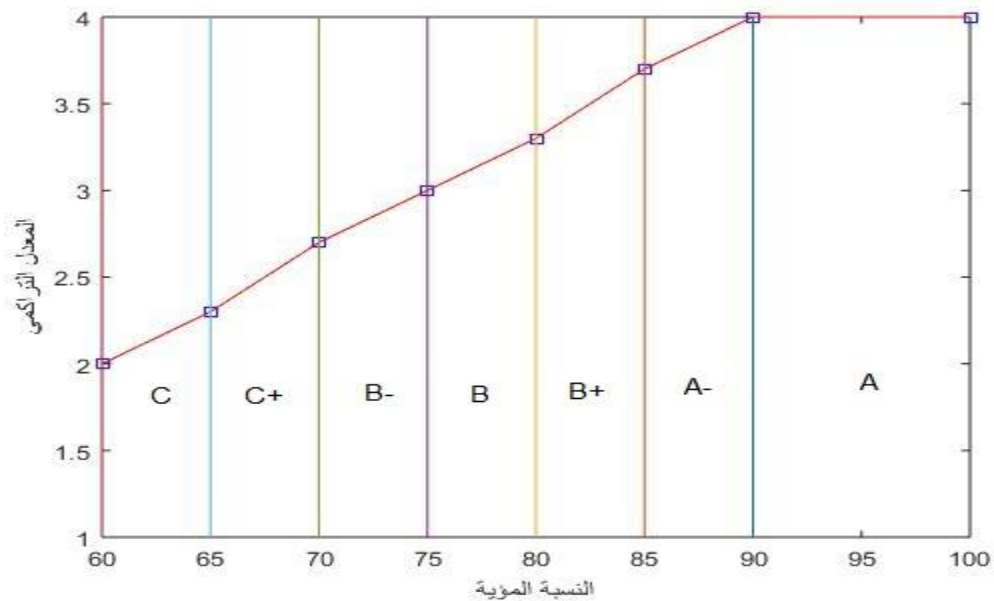
2- The CGPA is calculated from the following table based on the cumulative percentage of the subjects:

Verbal Grade	Grade	Points		Percentage	
		From	To	From	To
Excellent	A	4	4	90	100
Excellent	A-	3.7	3.99	85	< 90
Very Good	B+	3.3	3.699	80	< 85
Very Good	B	3	3.299	75	< 80
Good	B-	2.7	2.999	70	< 75
Good	C+	2.3	2.699	65	< 70
Pass	C	2	2.299	60	< 65
Fail	F	0	0	0	< 60

Where the CGPA is recorded based on a table built from the estimates and percentages approved as shown in the figure below, considering all colleges except the two (The College of Languages and Translation and The College of Special Education)

- Example:

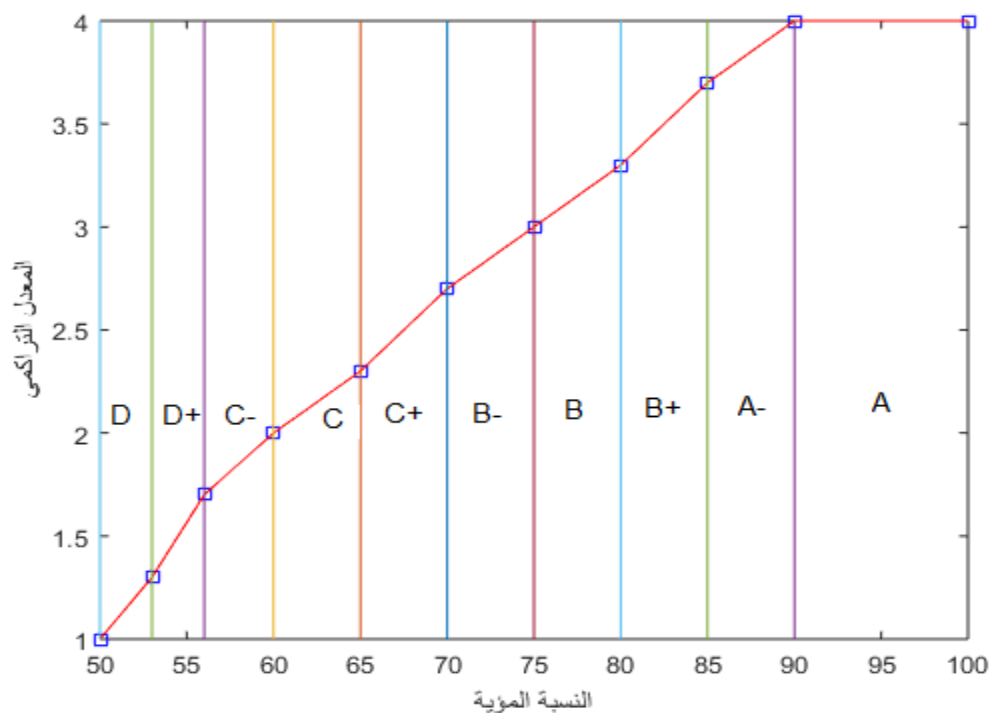
The student obtaining 88% according to the CGPA Table will be between 3.7 and 4, based on the figure and the table that value is calculated for the student as = 3.88 and so on.



Meanwhile the table for colleges of arts (The College of Languages and Translation and The College of Special Education) is the following:

Verbal Grade	Grade	Points	Percentage	
			From	To
Excellent	A	4	90	100
Excellent	A-	3.7	85	< 90
Very Good	B+	3.3	80	< 85
Very Good	B	3	75	< 80
Good	B-	2.7	70	< 75
Good	C+	2.3	65	< 70
Pass	C	2	60	< 65
Pass	C-	1.7	56	< 60
Pass	D+	1.3	53	< 56
Pass	D	1	50	< 53
Fail	F	0	0	< 50

Where the CGPA is recorded based on a table constructed from the estimates and percentages approved as shown in the figure below, especially for the colleges of arts (Languages and Translation and Special Education).



- **Example:**

The student obtaining 88% according to the CGPA Table will be between 3.7 and 4, based on the figure and the table that value is calculated for the student as = 3.88 and so on.

Accordingly, there will be no difference between the student's grade, the verbal grade, the student's percentage, and the CGPA.