



MUST Rankings Office

**MISR UNIVERSITY
FOR SCIENCE & TECHNOLOGY**



SDG. 11 (Sustainable Cities and Communities)

11.4 Sustainable practices

11.4.1 Sustainable Practices Targets



SDG. 11 (Sustainable Cities and Communities)

Metrics and indicators

Underlined blue text directs to supporting evidence

11.4 Sustainable practices

11.4.1 Sustainable Practices Targets

MUST adopts sustainable commuting practices through providing a convoy of cars, buses, minibuses, and electric cars for students and employee transportation from and to the university to reduce car movement on campus. MUST provide 55 buses for employee transportation and 19 minibuses for students' transportation in Cairo governorate.



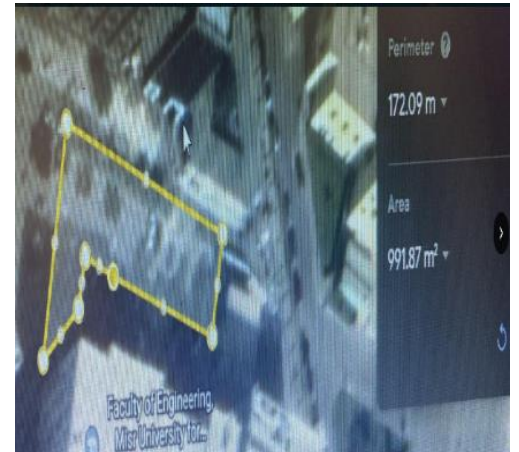
Other sustainable commuting measures are taken by the university as follows:

- Dedicated car parking areas with capacity 650 cars away from the schools' buildings



MUST Rankings Office

MISR UNIVERSITY
FOR SCIENCE & TECHNOLOGY



An aerial view showing the ratio of parking area to the total campus area

- Forbid car movement on roads used heavily by students.





MUST Rankings Office

MISR UNIVERSITY FOR SCIENCE & TECHNOLOGY





MUST Rankings Office

MISR UNIVERSITY
FOR SCIENCE & TECHNOLOGY

- Limit regular cars and allow only zero emission vehicles, e.g. electric cars, on road that students use regularly.



- Smart gates have been installed at university entrances allowing only subscribed motorists to enter the campus.



- An off-campus parking lots are available to reduce the number of cars on campus.
- A monorail – under construction- crosses the main road in front of the university which will also reduce car movement on campus.



MUST Rankings Office

MISR UNIVERSITY
FOR SCIENCE & TECHNOLOGY





MUST Rankings Office

MISR UNIVERSITY
FOR SCIENCE & TECHNOLOGY



Also, To make life easier on Campus for disabled and people with special needs, facilities for the disabled, Pedestrian path on campus, and electric cars for within campus transportation, with onsite ramps providing easy access to buildings. Lifts also feature braille-buttons to help students independently use them. Moreover, MUST has three Mobile Hospitals available on campus and go out to serve the public in different governorates in medical convoys three to four time in the year.





MUST Rankings Office

MISR UNIVERSITY
FOR SCIENCE & TECHNOLOGY



For more Info:

- <https://must.edu.eg/university-life/>